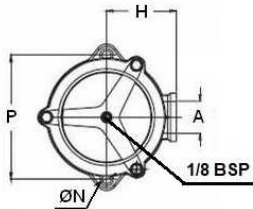
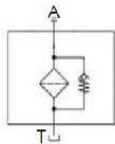
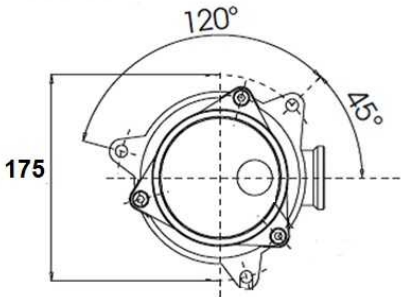


FITR10
FITR21
FITR23



FITR40



Direct tank mounting

Pressure: Max.pressure:8 bar
Test pressure: 12 bar
Burst pressure:16 bar

OPERATING TEMPERATURE RANGE: -25°C +100°C

FLUID COMPATIBILITY: Full with HH-HL-HM-HV (acc. To ISO 2943).

DIFFERENTIAL COLLAPSE PRESSURE: 10 bar

Tested according to ISO 2941, 2942, 2943

MATERIALS: Cover: aluminium alloy
Head: aluminium alloy
Bowl: PA6 reinforced (size 10 to 43) - zinc plated steel (size 50 to 64)
Seal: NBR (FKM on request)

| Part nº | R1 | Cartridge | ØB | ØE | ØN | C | D | F | H | I | L | P |
|---------|----------|-----------|-----|----|-----|-----|----|----|----|----|----|-----|
| FITR10 | 1/2" BSP | FITCR10 | 68 | 58 | 7 | 89 | 15 | 19 | 53 | 27 | 24 | 90 |
| FITR21 | 3/4" BSP | FITCR20 | 87 | 78 | 8,5 | 104 | 25 | 22 | 65 | 36 | 28 | 115 |
| FITR23 | 1" BSP | FITCR22 | 87 | 78 | 8,5 | 153 | 25 | 22 | 65 | 36 | 28 | 115 |
| FITR40 | 1" BSP | FITCR40 | 129 | - | 10 | 241 | 30 | 40 | 95 | 55 | 35 | 175 |