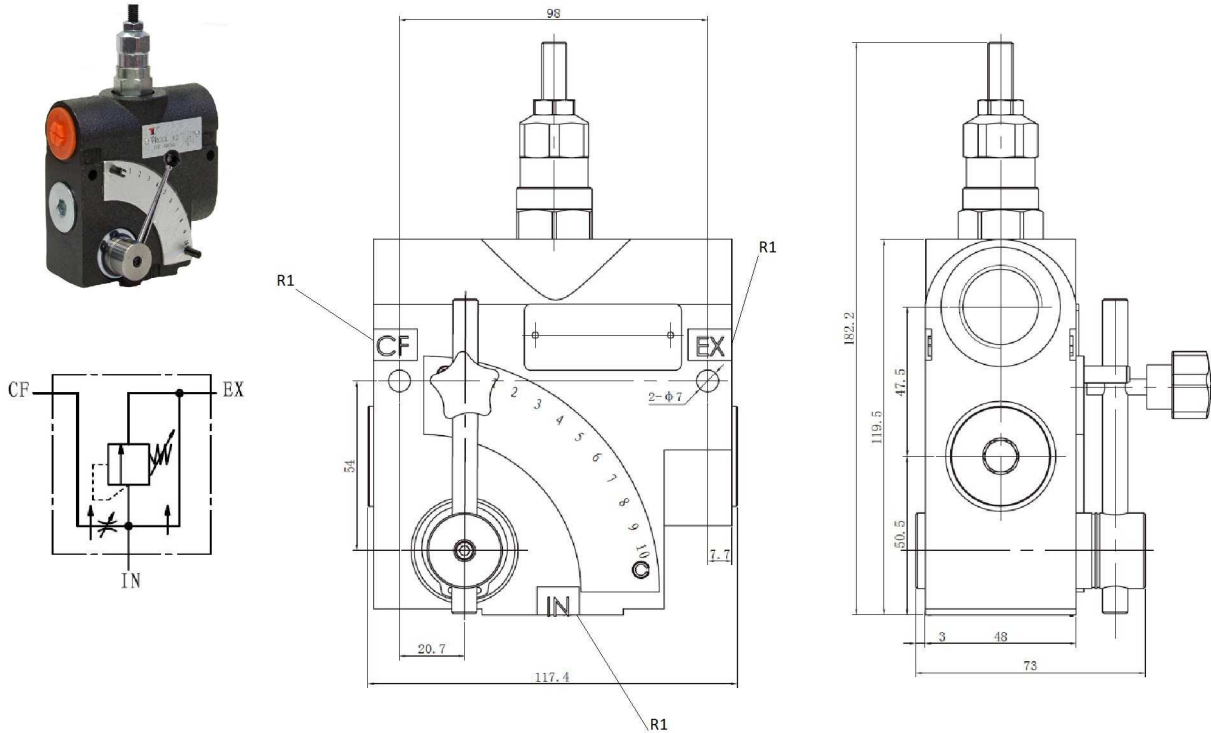


Hydraulic valves

Flow control valve

3 ways compensated flow control valve - Molten body with pressure relief valve

Page: 1/1



Limiter valve regulation: 0-200 Bar

Part n°	R1	R2	Max. flow (l/min)	Max. reg. flow (l/min)	Max. Press. (bar)
VRCL 38	3/8" BSP	M27x2	30	0-30	200
VRCL 12	1/2" BSP	M27x2	60	0-60	200
VRCL 34	3/4" BSP	M27x2	110	0-110	200