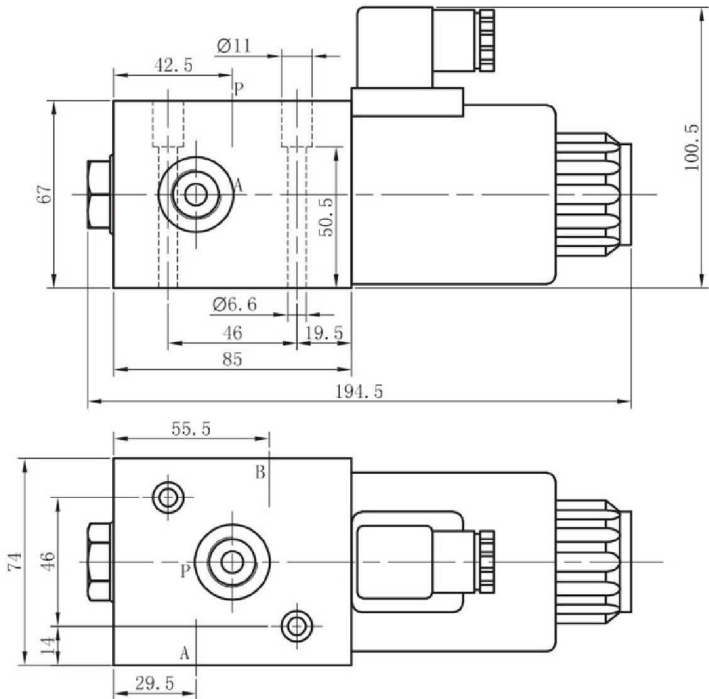
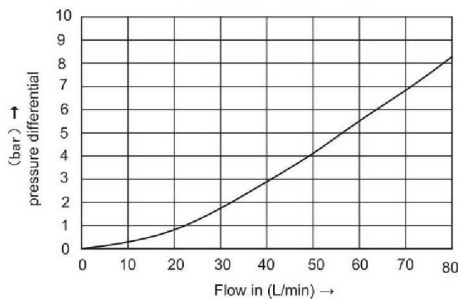


characteristic curves
1=P1-A;B-P2 2=P1-C;D-P2



Material: Body is molten made
Core: 31 mm

| Part nº | R1 | Nº ways | Voltage (V) | Max. flow (l/min) | Max. Press. (bar) |
|-----------|----------|---------|-------------|-------------------|-------------------|
| S3V1212CC | 1/2" BSP | 3 | 12 VDC | 80 | 250 |
| S3V1224CC | 1/2" BSP | 3 | 24 VDC | 80 | 250 |

Transfer of closed sites