



VINCKE
HYDRAULIC
COUPLINGS

link to your page / link a su página



VINCKE QUICK COUPLING

▶ VSA	3
▶ VSA-PC	5
▶ VNV	7
▶ VNS	9
▶ VSBL	11
▶ VSBX	13
▶ VSP	15
▶ VSP-PC	17
▶ VST-PC	19
▶ VSV	21
▶ VHP	23
▶ VSR	25
▶ VCFPV	27
▶ VVF	29
▶ VVA	31
▶ PCA	33
▶ MCA	34





Product Description

VSA Series: ISO 7241-1A Interchange

1. Body Size: 1/4", 3/8", 1/2", 3/4" 1", 1"1/4, 1"1/2, 2".
2. Valve: Poppet Type
3. Body materials: Zinc-plated carbon steel body.
4. Seals materials: Standard Nitrile (Buna-N)
5. Working temperature: -25° C + 100° C. Others on request
6. Back-up Ring: Teflon
7. Threads available: BSPP female threads.

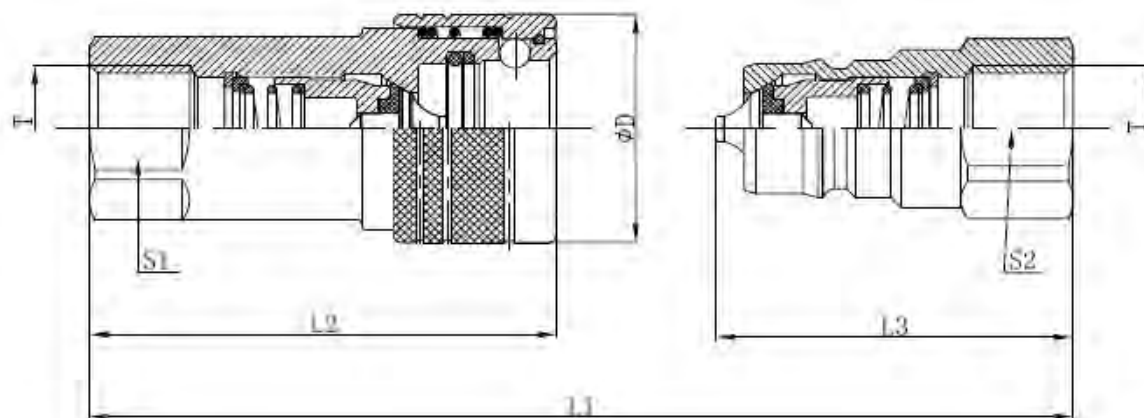
Interchange Standard Parker 60 series, Faster ANV,
Aeroquip FD 56, Snap Tite 61, Dnp PAV1, Safeway S56, Stucchi BIR

Features

1. Poppet valves are mated in stainless steel perch that maintains valve alignment and prevents flow checking.
2. Both the coupling sleeve and the nipple's body are hardened to make the VSA series couplings resistant to damage from brinelling and mechanical shock.
3. The durable ball-locking mechanism ensures a reliable connection every time.
4. VSA series couplings interchange with couplings meeting ISO 7241-1, Series A.

Applications

Versatile VSA series couplings are used in a wide range of hydraulic applications including construction equipment, manufacturing machinery, and in-plant systems. They can be found anywhere the fluid transfer lines need to be connected and disconnected for operation or electronics and automotive industry.



Type	ISO Ø	L1	L2	L3	ØD	S1	S2	T
VSA14	6,3	70	49	36,7	26	19	19	BSPP 1/4
VSA38	10	85,3	60,5	46,2	30,5	22	22	BSPP 3/8
VSA12	12,5	93,5	68,5	51,4	38	27	27	BSPP 1/2
VSA34	20	115,5	85	65	46	34	34	BSPP 3/4
VSA100	25	131,6	99,5	73	52	41	41	BSPP 1"

Technical characteristics

Type	ISO Ø	Q.	Max. Q	Max. Operating Pressure			Burst Pressure		
				Coupled	Male	Female	Coupled	Male	Female
	mm	l/min	l/min	Bar	Bar	Bar	Bar	Bar	Bar
VSA14	6,3	12	20	315	315	315	1450	1510	1760
VSA38	10	23	46	315	315	315	1450	1470	1520
VSA12	12,5	45	90	250	250	250	1250	1000	1460
VSA34	20	106	148	250	250	250	1040	900	1530
VSA100	25	189	200	200	200	200	900	800	960



Product Description

VSA-PC Series: ISO 7241-1A Interchange

1. Body Size: 1/2"
2. Valve: Poppet Type with pressure valve
3. Body materials: Zinc-plated carbon steel body
4. Seals materials: Standard Nitrile (Buna-N)
5. Working temperature: -20° C + 100° C. Others on request
6. Back-up Ring: Teflon
7. Threads available: BSPP female threads.

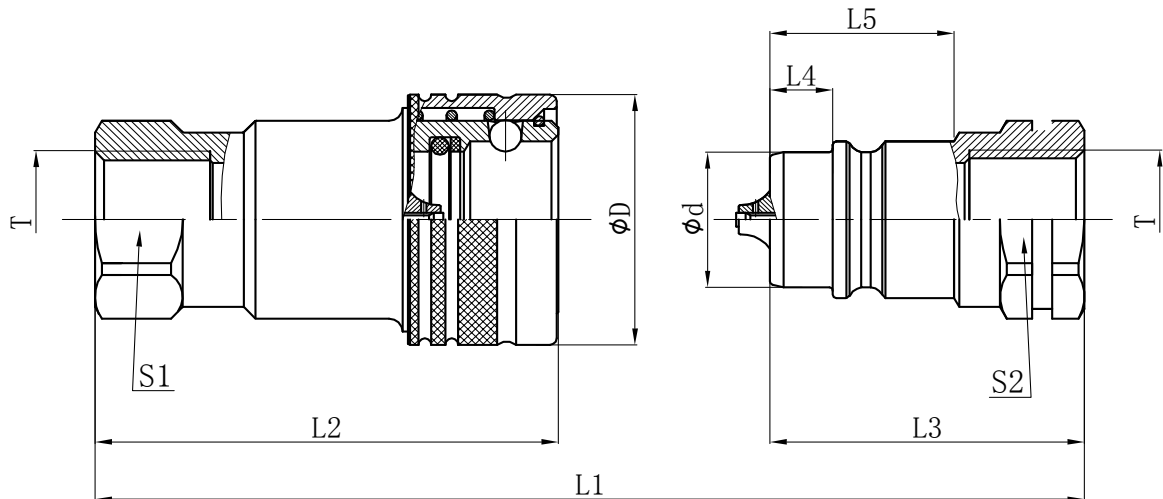
Interchange Standard Parker 6600 series, Faster ANV, Aeroquip FD 56, Snap Tite 61, Dnp PBV1, Stucchi BIR.

Features

1. Poppet valves are mated with a solid metal perch that maintains valve alignment and prevents flow checking.
2. Both the coupler' sleeve and the nipple's body are hardened to make the VSA series couplings resistant
3. The durable-ball-locking mechanism ensures a reliable connection every time.
4. VSA-PC series couplings interchange with couplings meeting ISO 7241-1, Series A.
5. Connection under residual pressure i allowed in the male or in the female (PC version). The residual pressure released by the small holes during connection.

Applications

Versatile VSA-PC series couplings are used in a wide range of hydraulic applications including construction equipment, manufacturing machinery, and in-plant systems. They can be found anywhere the fluid transfer lines need to be connected and disconnected for operation or maintenance of equipment.



Type	ISO Ø	L1	L2	L3	ØD	S1	S2	T
VSA-PC12	12,5	93,5	68,5	51,4	38	27	27	BSPP 1/2

Technical characteristics

Type	ISO Ø	Q.	Max. Q	Max. Operating Pressure			Burst Pressure		
				Coupled	Male	Female	Coupled	Male	Female
	mm	l/min	l/min	Bar	Bar	Bar	Bar	Bar	Bar
VSA-PC12	12,5	45	90	250	250	250	1250	1000	1460



Product Description

VNV Series: ISO 5675 Interchange

1. Body Size: 1/4", 3/8", 1/2", 3/4" 1"
2. Valve: Poppet Type
3. Body materials: Zinc-plated carbon steel body.
4. Seals materials: Standard Nitrile (Buna-N)
5. Working temperature: -25° C + 100° C. Others on request
6. Back-up Ring: Teflon
7. Threads available: BSPP female threads.

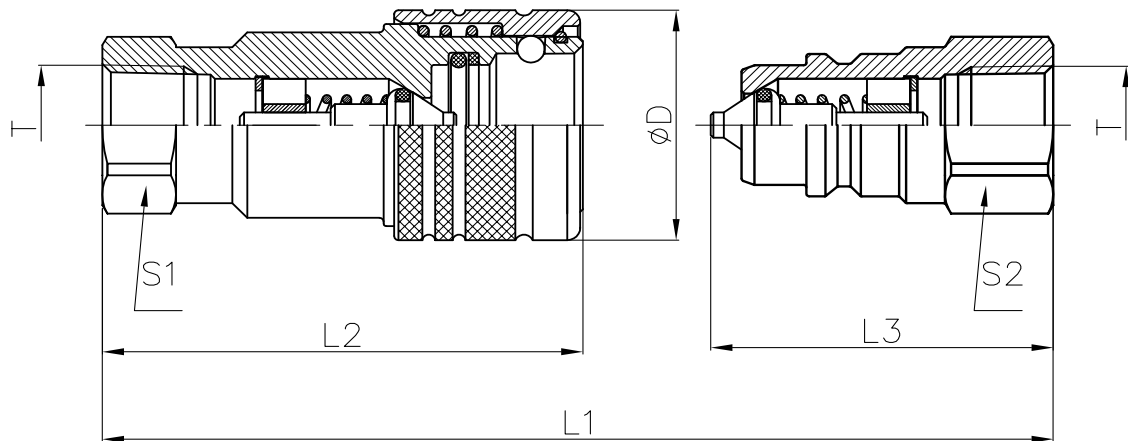
Interchange Standard Parker 4000 series, Faster NV, Aeroquip FD 42, Snap Tite 21, Dnp PDV1, Safeway S56, Stucchi IR/V.

Features

1. Poppet valves are mated in stainless steel perch that maintains valve alignment and prevents flow checking.
2. Both the coupling sleeve and the nipple's body are hardened to make the VNV series couplings resistant to damage from brinelling and mechanical shock.
3. The durable-ball-locking mechanism ensures a reliable connection every time.
4. VNV series couplings interchange with couplings meeting ISO 5675

Applications

Versatile VNV series couplings are used in a wide range of hydraulic applications including construction equipment, manufacturing machinery, and in-plant systems. They can be found anywhere the fluid transfer lines need to be connected and disconnected for operation or electronics and automotive industry.



Type	ISO Ø	L1	L2	L3	ØD	S1	S2	T
VNV14	6,3	74,3	55,5	39,1	28	19	19	BSPP 1/4
VNV38	10	85,2	63	46,1	35	22	22	BSPP 3/8
VNV34	20	115,8	86,5	64,7	48	34	34	BSPP 3/4
VNV100	25	131,5	99,5	72,4	52,5	41	41	BSPP 1"

Technical characteristics

Type	ISO Ø	Q.	Max. Q	Max. Operating Pressure			Burst Pressure		
				Coupled	Male	Female	Coupled	Male	Female
	mm	l/min	l /min	Bar	Bar	Bar	Bar	Bar	Bar
VNV14	6,3	12	24	300	300	300	1000	1000	1000
VNV38	10	23	46	300	300	300	1000	1000	1000
VNV34	20	106	148	250	250	250	1000	900	1000
VNV100	25	189	200	200	200	200	800	800	800



Product Description

VNS Series: ISO 5675 Interchange

1. Body Size: 1/4", 3/8", 1/2", 3/4" 1"
2. Valve: Poppet Type
3. Body materials: Zinc-plated carbon steel body.
4. Seals materials: Standard Nitrile (Buna-N)
5. Working temperature: -25° C + 100° C. Others on request
6. Back-up Ring: Teflon
7. Threads available: BSPP female threads.

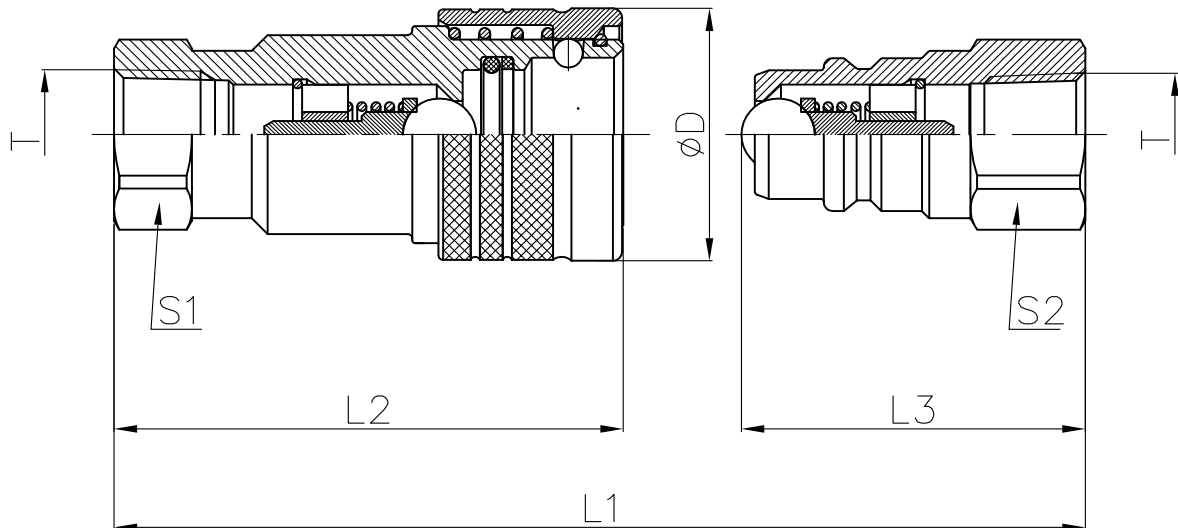
Interchange Standard Parker 4000 series, Faster NS, Aeroquip FD 42, Snap Tite 21, Dnp PDS1, Safeway S56, Stucchi IR.

Features

1. Ball valves are mated in stainless steel perch that maintains valve alignment and prevents flow checking.
2. Both the coupling sleeve and the nipple's body are hardened to make the VNS series couplings resistant to damage from brinelling and mechanical shock.
3. The durable-ball-locking mechanism ensures a reliable connection every time.
4. VNS series couplings interchange with couplings meeting ISO 5675

Applications

Versatile VNS series couplings are used in a wide range of hydraulic applications including construction equipment, manufacturing machinery, and in-plant systems. They can be found anywhere the fluid transfer lines need to be connected and disconnected for operation or electronics and automotive industry.



Type	ISO Ø	L1	L2	L3	ØD	S1	S2	T
VNS14	6,3	74,3	55,5	37,5	28	19	19	BSPP 1/4
VNS38	10	85,2	63	44,2	35	22	22	BSPP 3/8
VNS12	12,5	90,9	68,5	46,5	38	27	27	BSPP 1/2
VNS34	20	115,8	86,5	61,2	48	34	34	BSPP 3/4
VNS100	25	131,5	99,5	69,9	52,5	41	41	BSPP 1"

Technical characteristics

Type	ISO Ø	Q.	Max. Q	Max. Operating Pressure			Burst Pressure		
				Coupled	Male	Female	Coupled	Male	Female
	mm	l/min	l/min	Bar	Bar	Bar	Bar	Bar	Bar
VNS14	6,3	12	24	300	300	300	1000	1000	1000
VNS38	10	23	46	300	300	300	1000	1000	900
VNS12	12,5	45	90	250	200	200	800	550	550
VNS34	20	106	148	250	200	250	1000	600	900
VNS100	25	189	200	200	200	200	800	600	800



Product Description

VSBL Series: ISO 7241-1B Interchange

1. Body Size: 1/4", 3/8", 1/2", 3/4" 1".
2. Valve: Poppet Type
3. Body materials: Brass for the main parts.
4. Seals materials: Standard in viton FKM.
5. Working temperature: -25° C + 200° C. Others on request
6. Back-up Ring: Teflon
7. Threads available: BSPP female threads.

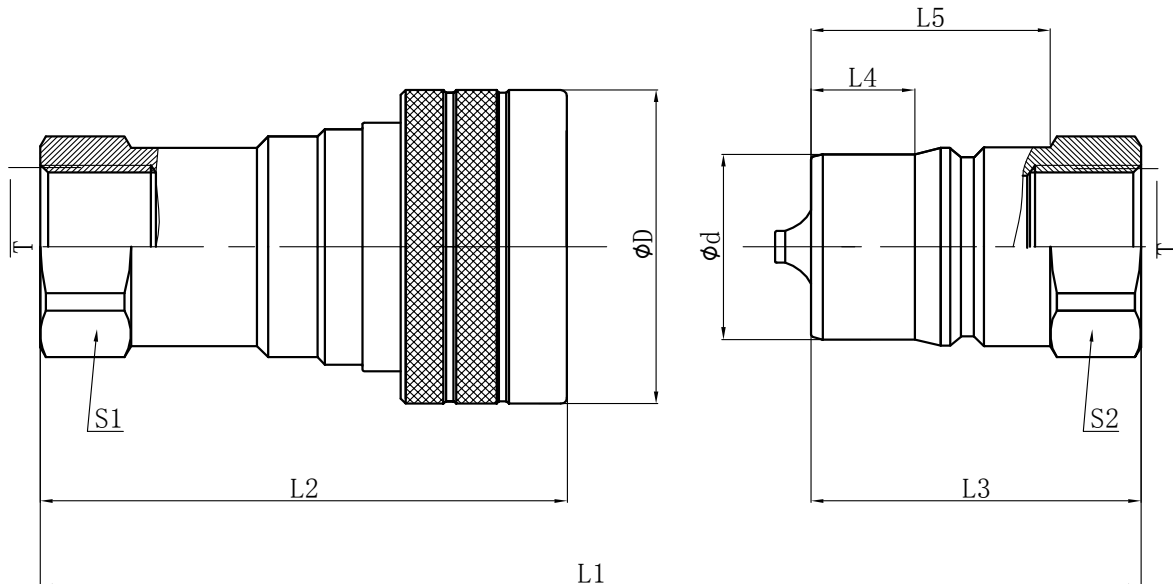
Interchange Standard Parker 60 series, Faster HNV, Dnp PBVM, Stucchi IRBO.

Features

1. Poppet valves are mated in stainless steel perch that maintains valve alignment and prevents flow checking.
2. Both the coupling sleeve and the nipple's body are hardened to make the VSBL series couplings resistant to damage from brinelling and mechanical shock.
3. The durable ball-locking mechanism ensures a reliable connection every time.
4. VSBL series couplings interchange with couplings meeting ISO 7241-1, Series B.

Applications

Versatile VSBL are used across the spectrum of hydraulic applications. Their general solidity permits the strenuous applications in aeronautics, electronics and automotive industry.



Type	ISO Ø	L1	L2	L3	ØD	S1	S2	T
VSBL14	6,3	72,5	57	36	27,5	19	19	BSPP 1/4
VSBL38	10	80	65	40	35	22	22	BSPP 3/8
VSBL12	12,5	94,5	74	46,5	44	27	27	BSPP 1/2
VSBL34	20	112,5	89	57,5	52	34	34	BSPP 3/4
VSBL100	25	132,5	106	65,5	60	41	41	BSPP 1"

Technical characteristics

Type	ISO Ø	Q.	Max. Q	Max. Operating Pressure			Burst Pressure		
				Coupled	Male	Female	Coupled	Male	Female
	mm	l/min	l/min	Bar	Bar	Bar	Bar	Bar	Bar
VSBL14	6,3	12	20	60	60	60	1270	800	840
VSBL38	10	23	46	60	60	60	950	800	870
VSBL12	12,5	45	90	60	60	60	1020	720	910
VSBL34	20	106	148	60	60	60	810	550	680
VSBL100	25	189	200	60	60	60	600	590	700



Product Description

VSBX Series: ISO 7241-1B Interchange

1. Body Size: 1/4", 3/8", 1/2", 3/4" 1".
2. Valve: Poppet Type
3. Body materials: Stainless steel
4. Seals materials: Standard in viton FKM.
5. Working temperature: -25° C + 200° C. Others on request
6. Back-up Ring: Teflon
7. Threads available: BSPP female threads.

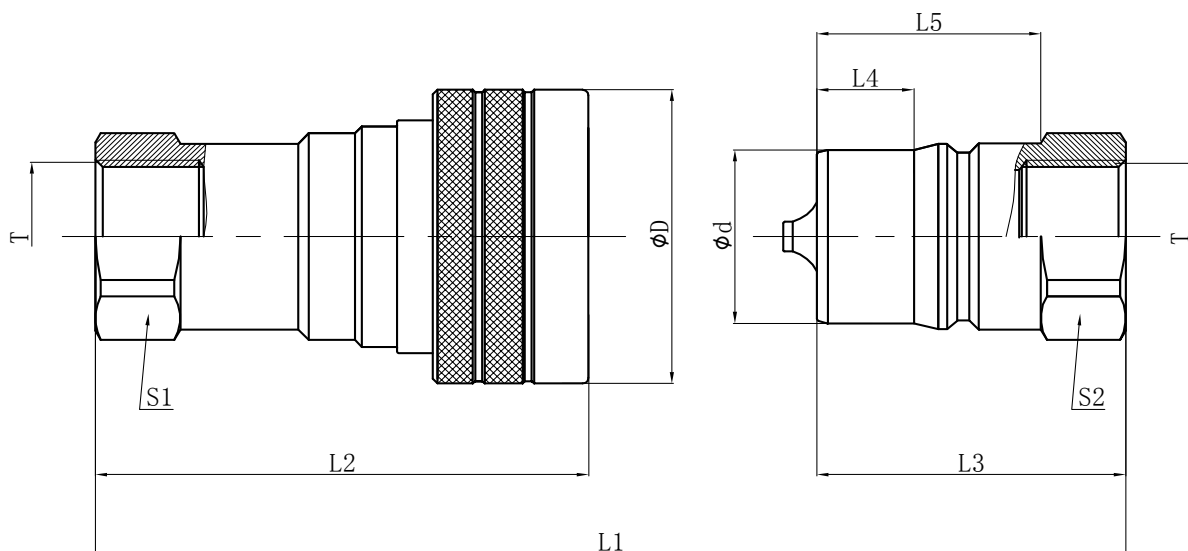
Interchange Standard Parker 60 series, Faster HNV, Dnp PBVX, Stucchi IRBX.

Features

1. Poppet valves are mated in stainless steel perch that maintains valve alignment and prevents flow checking.
2. Both the coupling sleeve and the nipple 's body are hardened to make the VSBX series couplings resistant to damage from brinelling an mechanical shock.
3. The durable-ball-locking mechanism ensures a reliable connection every time.
4. VSBX series couplings interchange with couplings meeting ISO 7241-1, Series B.

Applications

Versatile VSBX are used across the spectrum of hydraulic applications. Their general solidity permits the strenuous applications in aeronautics, electronics and automotive industry.



Type	ISO Ø	L1	L2	L3	ØD	S1	S2	T
VSBX14	6,3	72,5	57	36	27,5	19	19	BSPP 1/4
VSBX38	10	80	65	40	35	22	22	BSPP 3/8
VSBX12	12,5	94,5	74	46,5	44	27	27	BSPP 1/2
VSBX34	20	112,5	89	57,5	52	34	34	BSPP 3/4
VSBX100	25	132,5	106	65,5	60	41	41	BSPP 1"

Technical characteristics

Type	ISO Ø	Q.	Max. Q	Max. Operanting Pressure			Burst Pressure		
				Coupled	Male	Female	Coupled	Male	Female
	mm	l/min	l/min	Bar	Bar	Bar	Bar	Bar	Bar
VSBX14	6,3	12	20	210	210	210	1620	1700	1500
VSBX38	10	23	46	100	100	100	2100	1140	1110
VSBX12	12,5	45	90	100	100	100	1530	1540	1460
VSBX34	20	106	148	100	100	100	1070	1050	890
VSBX100	25	189	200	80	80	80	880	620	670



Product Description

VSP Series: Interchangeable with 1/2" VSA Series nipple.

1. Body Size: 1/2"
2. Valve: Poppet Type
3. Body materials: Zinc-plated carbon steel body
4. Seals materials: Standard Nitrile (Buna-N)
5. Working temperature: -20° C + 100° C. Others on request
6. Back-up Ring: Teflon
7. Threads available: BSPP female threads.

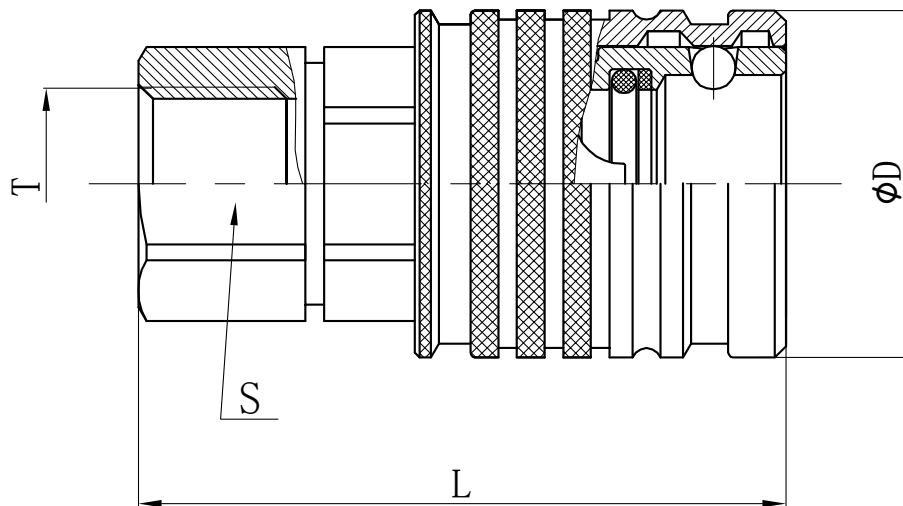
Interchange Standard Parker 2000 series, Faster PV, Aeroquip FD 72, Dnp PPV, Stucchi IRSV.

Features

1. Poppet valves are mated with a solid metal perch that maintains valve alignment and prevents flow checking.
2. Both the coupler' sleeve and the nipple's body are hardened to make the VSP series couplings resistant to damage from brinelling and mechanical shock.
3. The durable-ball-locking mechanism ensures a reliable connection every time.
4. VSP series couplings interchange with couplings meeting ISO 7241-1, Series A.

Applications

Versatile VSP series couplings are used in a wide range of hydraulic applications including construction equipment, manufacturing machinery, and in-plant systems. They can be found anywhere the fluid transfer lines need to be connected and disconnected for operation or maintenance of equipment.



Type	ISO Ø	L1	L2	L3	ØD	S1	S2	T
VSP12	12,5	96	70	51,4	38	27	27	BSPP 1/2

Technical characteristics

Type	ISO Ø	Q.	Max. Q	Max. Operating Pressure			Burst Pressure		
				Coupled	Male	Female	Coupled	Male	Female
	mm	l/min	l/min	Bar	Bar	Bar	Bar	Bar	Bar
VSP12	12,5	45	90	250	250	250	1240	1000	1600



Product Description

VSP-PC Series: Interchangeable with 1/2" VSA Series nipple.

1. Body Size: 1/2"
2. Valve: Poppet Type
3. Body materials: Zinc-plated carbon steel body
4. Seals materials: Standard Nitrile (Buna-N)
5. Working temperature: -20° C + 100° C. Others on request
6. Back-up Ring: Teflon
7. Threads available: BSPP female threads.

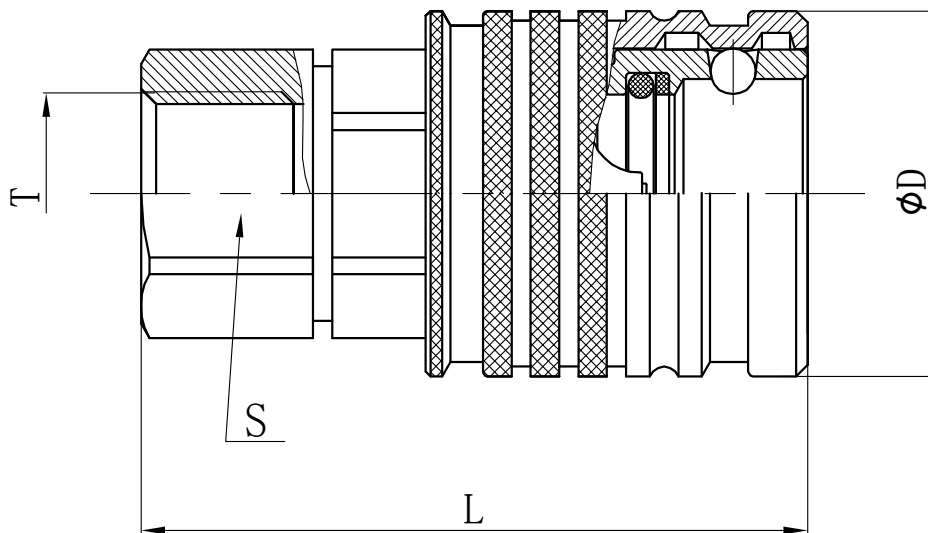
Interchange Standard Parker 2000 series, Faster PV, Aeroquip FD 72, Dnp PPV, Stucchi IRSV-PC

Features

1. Poppet valves are mated with a solid metal perch that maintains valve alignment and prevents flow checking.
2. Both the coupler' sleeve and the nipple's body are hardened to make the VSP series couplings resistant
3. The durable-ball-locking mechanism ensures a reliable connection every time.
4. VSP-PC series couplings interchange with couplings meeting ISO 7241-1, Series A.
5. Connection under residual pressure is allowed in the male or in the female (PC version). The residual pressure released by the small holes during connection.

Applications

Versatile VSP-PC series couplings are used in a wide range of hydraulic applications including construction equipment, manufacturing machinery, and in-plant systems. They can be found anywhere the fluid transfer lines need to be connected and disconnected for operation or maintenance of equipment.



Type	ISO Ø	L1	L2	L3	ØD	S1	S2	T
VSP-PC12	12,5	96	70	51,4	38	27	27	BSPP 1/2

Technical characteristics

Type	ISO Ø	Q.	Max. Q	Max. Operating Pressure			Burst Pressure		
				Coupled	Male	Female	Coupled	Male	Female
	mm	l/min	Bar	Bar	Bar	Bar	Bar	Bar	Bar
VSP-PC12	12,5	45	90	250	250	250	1240	1000	1600



Product Description

VST-PC Series:

1. Body Size: 3/8", 1/2", 3/4" 1"
2. Valve: Poppet Type
3. Body materials: Zinc-plated carbon steel body.
4. Seals materials: Standard Nitrile (Buna-N)
5. Working temperature: -20° C + 100° C. Others on request
6. Back-up Ring: Teflon
7. Threads available: BSPP female threads.

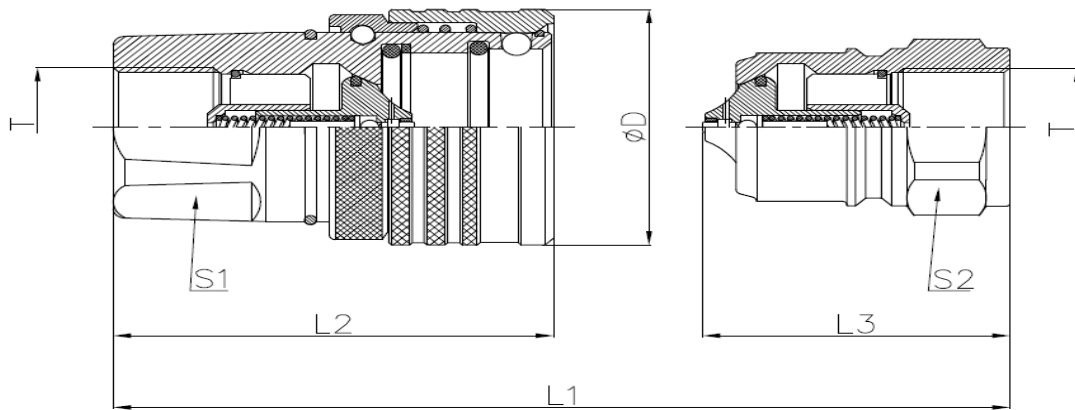
Interchange Standard Tema T, Cejn 525, Stucchi IRC.

Features

1. Poppet valves are mated in stainless steel perch that maintains valve alignment and prevents flow checking.
2. Both the coupling sleeve and the nipple's body are hardened to make the VST-TC series couplings resistant to damage from brinelling and mechanical shock.
3. The durable-ball-locking mechanism ensures a reliable connection every time.
4. Connections under residual pressure is allowed in the male or in the female (PC VERSION)

Applications

Versatile VST-TC series couplings are used in a wide range of hydraulic applications including construction equipment, manufacturing machinery, and in-plant systems. They can be found anywhere the fluid transfer lines need to be connected and disconnected for operation or electronics and automotive industry.



Type	ISO Ø	L1	L2	L3	ØD	S1	S2	T
VST-TC38	10	77	60	42	34	24	22	BSPP 3/8
VST-TC12	12,5	82	65	46	40	30	27	BSPP 1/2
VST-TC34	20	92	72	52	52	38	36	BSPP 3/4
VST-TC100	25	113	88	60	62	45	46	BSPP 1"

Technical characteristics

Type	ISO Ø	Q.	Max. Operating Pressure			Burst Pressure		
			Coupled	Male	Female	Coupled	Male	Female
	mm	l/min	Bar	Bar	Bar	Bar	Bar	Bar
VST-TC38	10	46	460	370	370	1300	1100	1100
VST-TC12	12,5	90	400	330	330	1100	1000	1000
VST-TC34	20	212	330	330	330	1000	1000	1000
VST-TC100	25	378	330	330	330	1000	1000	1000



Product Description

VSV Series: Screw to connect.

1. Body Size: 1/4", 3/8", 1/2", 3/4" 1", 1"1/4.
2. Valve: Poppet Type
3. Body materials: Zinc-plated carbon steel.
4. Seals materials: Standard Nitrile (Buna-N). On request FKM, EPDM and VMQ
5. Working temperature: -20° C + 100° C. Others on request
6. Back-up Ring: Teflon
7. Threads available: BSPP female threads, Metrics (DIN 2353 / ISO 8434-1), (DIN 3852) and male thread.

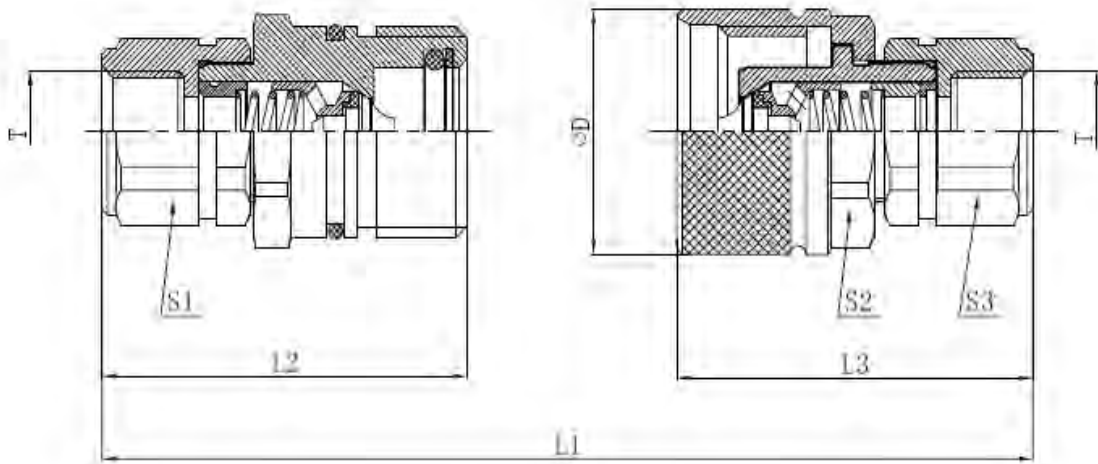
Interchange Standard Faster CVV, Dnp PVVX, Stucchi VD, Voswinkel HD:

Features

1. Connection system: Screw system.
2. Disconnection system: Screw to disconnect.
3. Connection with residual pressure: Allowed in one half of the coupling up to 10 Mpa.
4. Disconnection with residual pressure: Allowed.

Applications

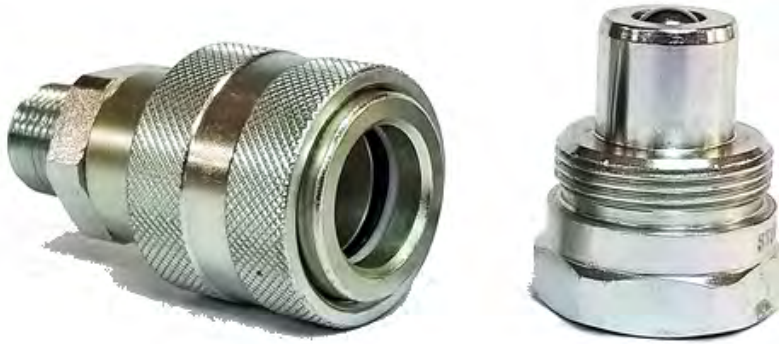
For their strength VSV couplers are highly recommended for heavy duty industrial applications. The screw system allows the connection either with male or female under pressure.



Type	ISO Ø	L1	L2	L3	ØD	S1	S2	S3	T
VSV14	6,3	90,8	60	56,9	34,5	19	30	19	BSPP 1/4
VSV38	10	98,6	64,2	61,5	34,3	24	30	24	BSPP 3/8
VSV12	12,5	103,6	66,5	64,8	42	30	36	30	BSPP 1/2
VSV34	20	132,1	85	78,9	48	36	41	36	BSPP 3/4
VSV100	25	151	100	86	55	50	50	50	BSPP 1"
VSV114	31,5	186	113	132	80	55	75	55	BSPP 1 1/4

Technical characteristics

Type	ISO Ø	Q.	Max. Q	Operating Pressure	Burst Pressure			Fluid spillage
					Coupled	Male	Female	
	mm	l/min	l/min	Bar	Bar	Bar	Bar	cc
VSV14	6,3	12	20	350	1400	1400	1400	0,8
VSV38	10	23	46	325	1830	1300	1530	1,4
VSV12	12,5	45	90	300	1490	1220	1510	2,7
VSV34	20	106	148	250	1490	1070	1390	9,3
VSV100	25	189	200	250	1100	1110	1110	16
VSV114	31,5	288	380	200	700	700	700	30



Product Description

VHP Series:

1. Body Size: 1/4", 3/8"
2. Valve: Ball valve
3. Body materials: Zinc-plated carbon steel body.
4. Seals materials: Standard Nitrile (Buna-N)
5. Working temperature: -20° C + 100° C. Others on request
6. Back-up Ring: Teflon

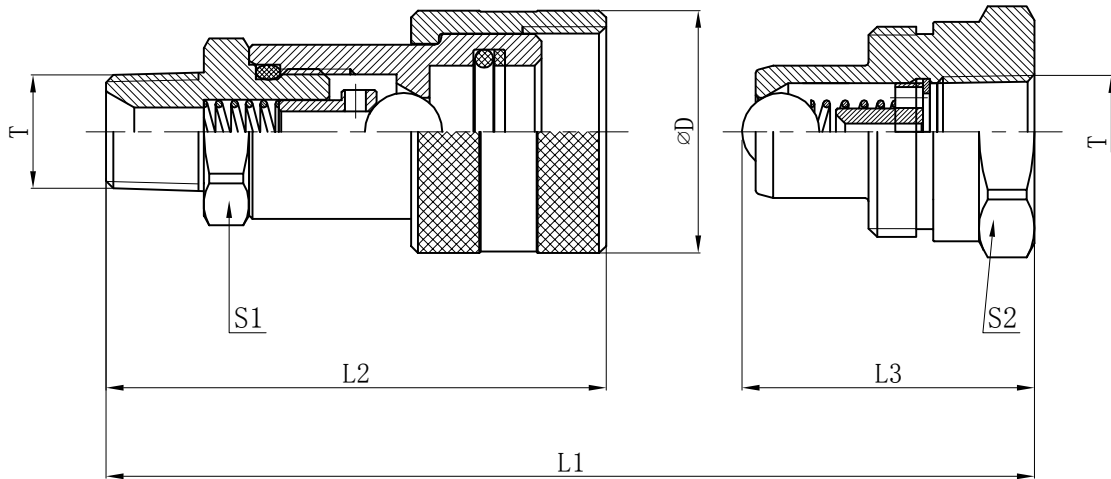
Interchange Standard Parker 3000 series, Faster PVVM, Stucchi IVHP.

Features

1. Ball valves are mated with a solid metal perch that maintains valve alignment and prevents flow checking.
2. The screw system allows connection and disconnection under pressure.

Applications

VHP couplings with their threaded locking system and precision ball-type check valves are designed for extremely high pressure applications.



Type	ISO Ø	L1	L2	L3	ØD	S1	S2	T
VHP14	6,3	81	52	39	28	21	19	NPT 1/4
VHP38	10	96	61	41	35	24	32	NPT 3/8

Technical characteristics

Type	ISO Ø	Q.	Operant ing Pressure	Burst Pressure			Fluid spillage
				Coupled	Male	Female	
	mm	l/min	Bar	Bar	Bar	Bar	cc
VHP14	6,3	5	700	2270	1530	2050	0,2
VHP38	10	9	700	2220	1540	2020	0,6



Product Description

VSR Series: Screw to connect.

1. Body Size: 3/4", 1"
2. Valve: Poppet type.
3. Body materials: Zinc-plated carbon steel body.
4. Seals materials: Standard Nitrile (Buna-N)
5. Working temperature: -20° C + 100° C. Others on request
6. Back-up Ring: Teflon
7. Threads available: BSPP female threads.

Interchange Standard Faster CVE, Dnp PVE1.

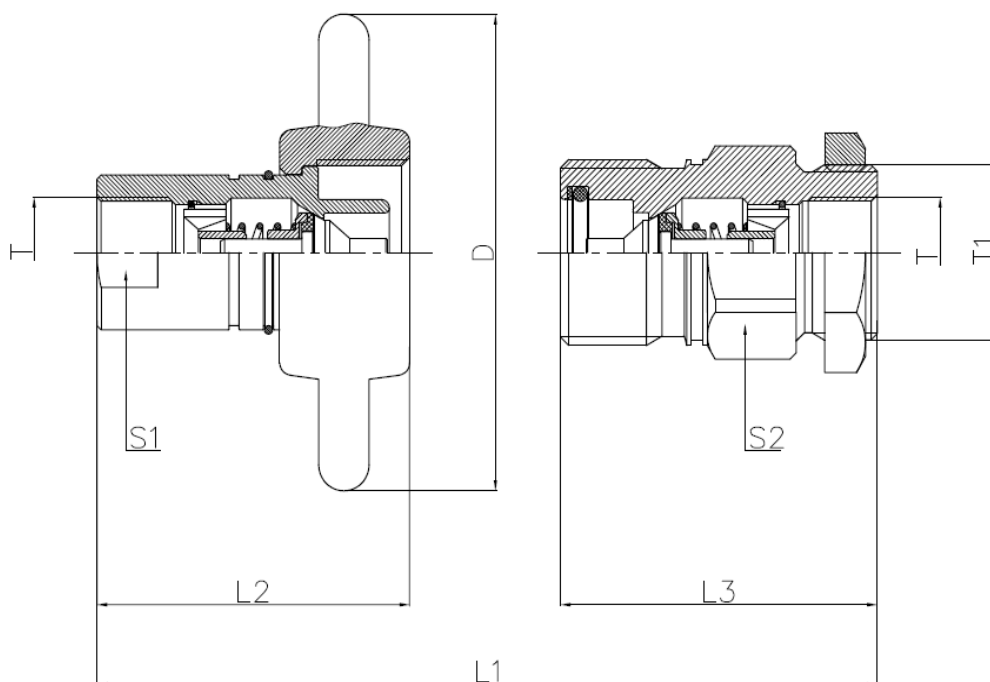
Features

1. Connection system: Screw system.
2. Disconnection system: Screw to disconnect.
3. Connection with residual pressure: Allowed in one half of the coupling up to 10 Mpa.
4. Disconnection with residual pressure: Allowed.

Applications

Versatile VSR series couplings are used in a wide range of hydraulic applications including vehicles and road machine. are designed for extremely high pressure applications.

They can be found anywhere the fluid transfer lines need to be connected and disconnected for operation or maintenance of equipment.



Type	ISO Ø	L1	L2	L3	ØD	S1	S2	T	T1
VSR34	20	132,5	76	78	115	33	46	BSPP 3/4"	BSPP 1"1/4"
VSR100	25	145	81,5	83	115	40	55	BSPP 1"	BSPP 1"1/4"

Technical characteristics

Type	ISO Ø	Q.	Operating Pressure	Burst Pressure			cc
				Coupled	Male	Female	
	mm	l/min	Bar	Bar	Bar	Bar	
VSR34	20	106	700	2270	1530	2050	0,2
VSR100	25	189	700	2220	1540	2020	0,6



Product Description

VCFPV Series: ISO 7241-2 Interchange

1. Body Size: 1/2"
2. Valve: Poppet Type
3. Body materials: Steel
4. Seals materials: Standard Nitrile (Buna-N)
5. Working temperature: -20° C + 100° C. Others on request
6. Back-up Ring: Teflon
7. Threads available: BSPP female threads.
6. SYSTEM: PUSH-PULL

Interchange Standard Faster 3CFPV, Dnp PPK3.

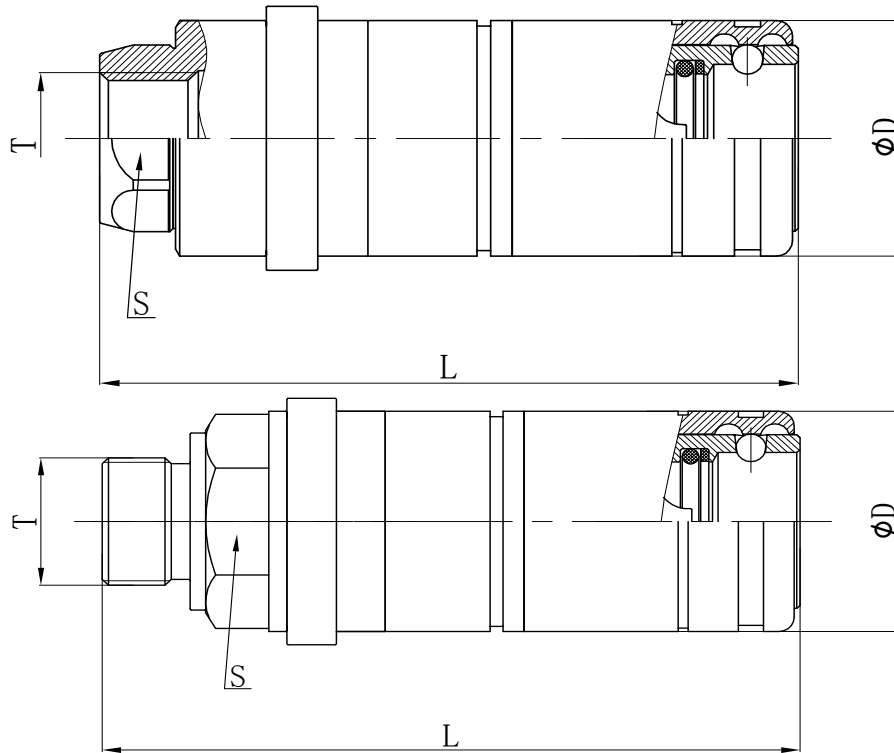
Features

1. Poppet valves are mated with a solid metal perch that maintains valve alignment and prevents flow checking.
2. Both the coupler' sleeve and the nipple's body are hardened to make the VCFPV series couplings resistant to damage from brinelling and mechanical shock.
3. The durable-ball-locking mechanism ensures a reliable connection every time.
4. VCFPV series couplings interchange with couplings meeting ISO 7241-1, Series A.
5. Connection by pushing the male coupling.
6. Disconnection by pulling the male part.
7. Connectable with male part under pressure.

Applications

Versatile VCFPV series couplings are used in a wide range of hydraulic applications including construction equipment, manufacturing machinery, and in-plant systems. They can be found anywhere the fluid transfer

lines need to be connected and disconnected for operation or maintenance of equipment.



Type	ISO Ø	L	ØD	S	T
VCFPV22	12,5	111	38	32	M-22x150
VCFPV12	12,5	107	38	27	BSPP 1/2

Technical characteristics

Type	ISO Ø	Q.	Max. Operanting Pressure			Burst Pressure		
			Coupled	Male	Female	Coupled	Male	Female
	mm	l/min	Bar	Bar	Bar	Bar	Bar	Bar
VCFPV22	12,5	68	250	250	250	1050	1200	1000
VCFPV12	12,5	68	250	250	250	1240	1200	1000



Product Description

VVF Series: ISO 5676 NFU 16006/68 Interchange

1. Body Size: 3/8, 1/2, METRIC 18x150
2. Valve: Flat face
3. Body materials: Zinc-plated carbon steel body.
4. Seals materials: Standard Nitrile (Buna-N)
5. Working temperature: -20° C + 100° C. Others on request
6. Back-up Ring: Teflon
7. Threads available: BSPP and Metric.

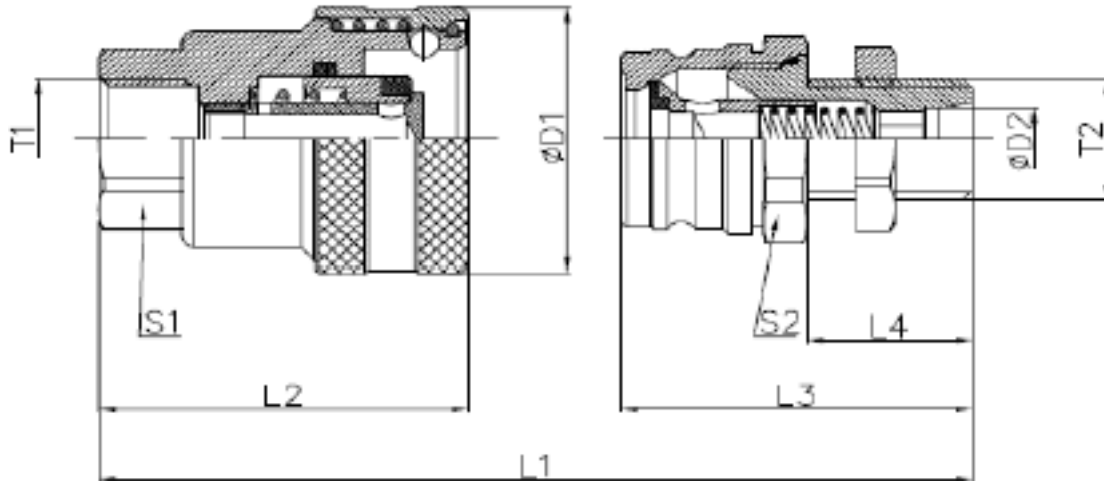
Interchange Standard Faster VF, Dnp PFT, Stucchi IFR

Features

1. Flat face are mated with a solid metal perch that maintains valve alignment and prevents flow checking. Characterized by screw-to-connect sleeve, their interchangeability is based on market driven standards.
2. Both the coupler sleeve and the nipple's body are hardened to make the VVF series couplings resistant to damage from brinelling and mechanical shock.
3. The durable-ball-locking mechanism ensures a reliable connection every time.
4. VVF series couplings interchange with couplings meeting ISO 5676 NFU 16006/68 interchange.

Applications

This series mainly apply in agriculture, especially the connection of hydraulic braking system.



Type	ISO Ø	L2	ØD1	S1	T1
VVF18150	12,5	55,8	44,3	27	M-18x150
VVF38	12,5	55,8	44,3	27	BSPP 3/8
VVF12	12,5	55,8	44,3	27	BSPP 1/2

Technical characteristics

Type	ISO Ø	Q.	Max. Operating Pressure			Burst Pressure		
			Coupled	Male	Female	Coupled	Male	Female
	mm	l/min	Bar	Bar	Bar	Bar	Bar	Bar
VVF18150	12,5	24	150	150	150	930	900	620
VVF38	12,5	24	150	150	150	930	900	620
VVF12	12,5	24	150	150	150	930	900	620



Product Description

VVA Series: French m

1. Body Size: 12,5
2. Valve: Flat face
3. Body materials: Steel
4. Seals materials: Standard Nitrile (Buna-N)
5. Working temperature: -20° C + 100° C. Others on request
6. Back-up Ring: Teflon
7. Threads available: BSPP and Metric.

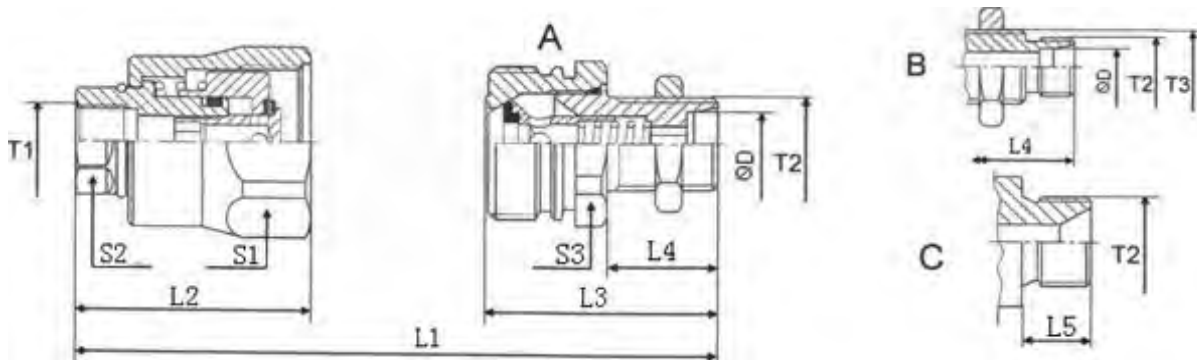
Interchange Standard Dnp VVT, Faster VA.

Features

1. VAA couplings are commonly used in Agriculture Market for braking systems and consequently very similar to VF braking valves. Characterized by screw-to-connect sleeve, their interchangeability is based on market driven standards.

Applications

Versatile VVA series couplings are used in Agriculture Market



Type	ISO Ø	L1	L2	L3	L4	ØD	S1	S2	T1	T2
VVA38	12,5		52,8				41	22	BSPP 3/8	BSPP 3/8
VVA1815	12,5		52,8				41	22	M-18x150	M-18x150
VVA12	12,5	88,5		48	15					BSPP 1/2
VVA1815	12,5	88,5		49	21	12				M-18x150

Technical characteristics

Type	ISO Ø	Q.	Max. Operating Pressure			Burst Pressure		
			Coupled	Male	Female	Coupled	Male	Female
	mm	l/min	Bar	Bar	Bar	Bar	Bar	Bar
VVA38	12,5	24	200	200	200	1380	1030	600
VVA1815	12,5	24	200	200	200	1380	1030	600
VVA12	12,5	24	200	200	200	1380	1030	600
VVA1815	12,5	24	200	200	200	1380	1030	600



Product Description

PCA

1. For couplings VSA, VSA-PC, VSP, VSP-PL, VCFPV
2. Body Size: 1/4", 3/8", 1/2", 3/4", 1".
3. Body materials: PVC
5. PVC with diferents colours. Red, Blue, Yellow. Others colors on request.

Applications

Protective caps are always recommended to protect the couplings from damage, dirt inclusion, and will increase the product life. This is particularly important in agriculture applications where exoisyreti wather and aggregate materials are common.



Product Description

MCA

1. For males VSA, VSA-PC, VSP, VSPPC.
2. Body Size: 1/2"
3. Body materials: Steel
4. Seals materials: Standard Nitrile (Buna-N)
5. Working temperature: -20° C + 100° C. Others on request

Technical characteristics

Type	ISO Ø	L	ØD	S	T
MCA-PARKING	12,5				M-18x150

