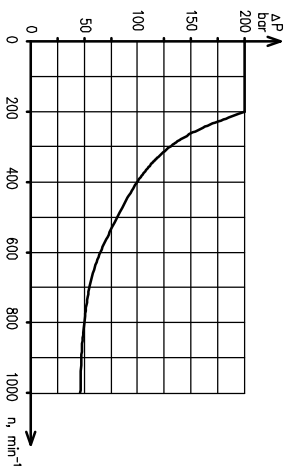
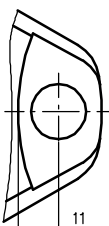
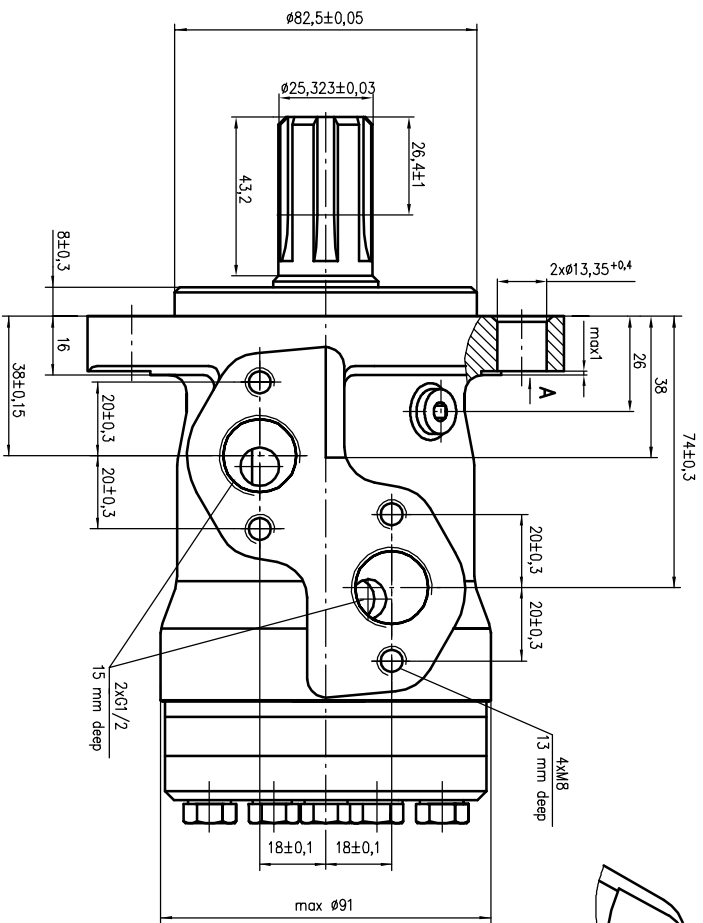
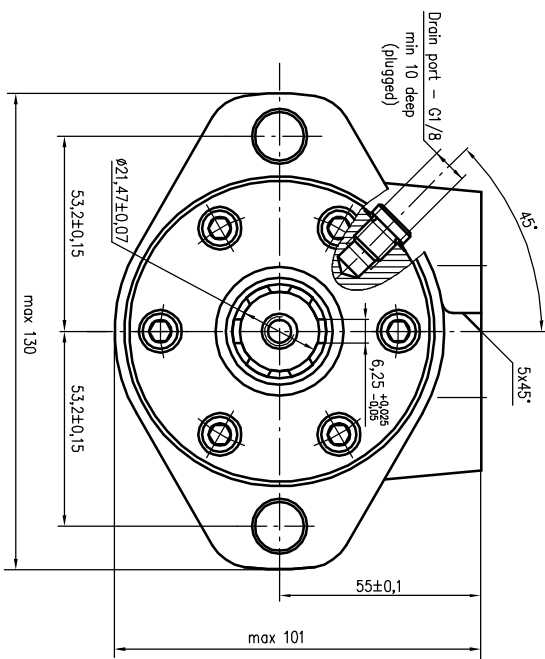
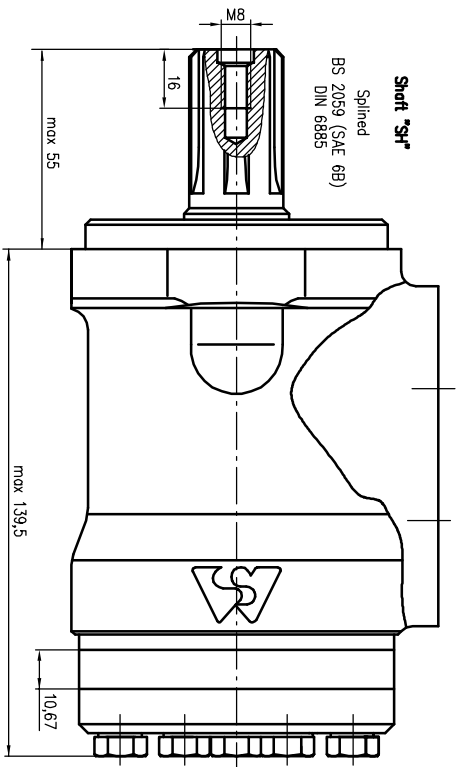
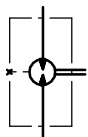


Hydraulic scheme



Max. Permissible Shaft Seal Pressure

Technical DATA

1. Displacement of the Motor: 79,2 cm³/rev
2. Max. Speed: 755 RPM
3. Max. Torque: 15,1 daNm
4. Max. Output: 19,5 kW
5. Max. Pressure Drop: 10,2 kW
6. Max. Oil Flow: 12,5 kW
7. Max. Inlet Pressure: 140 bar
8. Weight: 175 bar

Item/Quantity	Title/Name	Material	Weight	Article No./Reference
Material	Designed by	Metorova		13,04,2011
Hydraulic Motors type MP80SHU-04				Scale 1:1
Rev.	Rev.	Rev.	Rev.	Rev.
2	2	1	1	1

Rev/No	Revision note	Date	Signature/Checked
1	Change 5x45°	23.09.2010	
2	View A	13.04.2011	