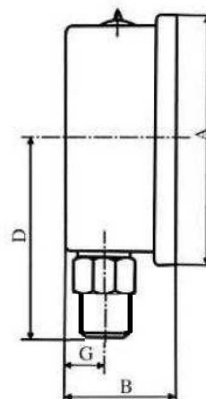
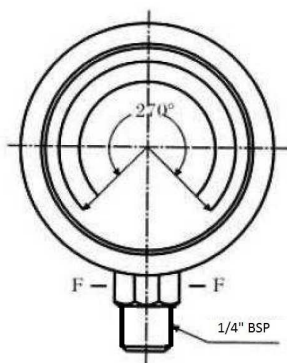


Pressure and vacuum gauges

Pressure gauges

Pressure gauge DN 63 vertical connection with glycerin (1/4" BSP)

Page: 1/2



Accuracy: 1,6%

Dimensions: A=68
B=29,8
D=54,5
F=HEX 14
G=9,5

Temperature: from -20 up to +60

Material: Case: stainless steel 304
Ring: stainless steel 304
Window: polycarbonate (glass)
Socket & Connection: brass

Part n°	R1	Scale (bar)
MFI6304001V	1/4" BSP	0-1
MFI63042.5V	1/4" BSP	0-2.5
MFI6304004V	1/4" BSP	0-4
MFI6304006V	1/4" BSP	0-6
MFI6304010V	1/4" BSP	0-10
MFI6304012V	1/4" BSP	0-12
MFI6304016V	1/4" BSP	0-16
MFI6304020V	1/4" BSP	0-20
MFI6304025V	1/4" BSP	0-25
MFI6304040V	1/4" BSP	0-40
MFI6304060V	1/4" BSP	0-60
MFI6304100V	1/4" BSP	0-100
MFI6304160V	1/4" BSP	0-160

Pressure and vacuum gauges

Pressure gauges

Pressure gauge DN 63 vertical connection with glycerin (1/4" BSP)

Page: 2/2

Part n°	R1	Scale (bar)
MFI6304250V	1/4" BSP	0-250
MFI6304315V	1/4" BSP	0-315
MFI6304400V	1/4" BSP	0-400
MFI6304600V	1/4" BSP	0-600
MFI63041000V	1/4" BSP	0-1000

*** Review attached PDF***

With dual bar/psi scale